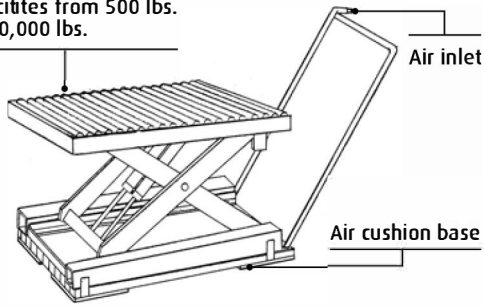
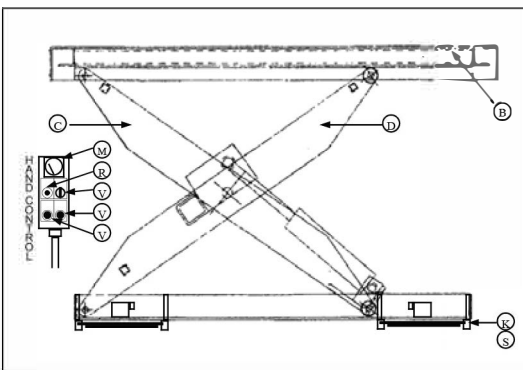
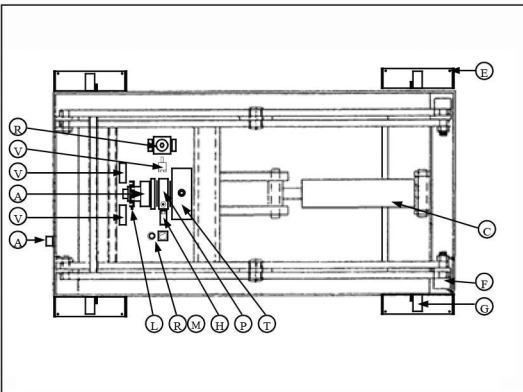


Capacities from 500 lbs. to 100,000 lbs.



AIR FILM TRANSPORTER WITH LIFT TABLE
(Shown with Conveyor top & handle)



JMP Solutions' Custom Scissor Lifts based on Air Film technology are revolutionary for heavy industrial moves

Reduced friction under the Mobile Lift Table is achieved by compressed air being forced out through the Air Cushion Elements between the load and floor surface. Friction is reduced to a minimum, allowing large loads to be moved in any direction (including straight sideways) with very little force.

Once the unit is de-energized, the table rests on high co-efficient pads, enabling the table and load to be more secure and stable without the need of locking wheels or other cumbersome brakes.

The base of the table can be kept low, within 2" of the Floor - minimizing the possibility of tipping and creating a smaller collapsed height.

CONTROLS

Choose from single regulation or optional controls to adjust for off-set loading. The unit pictured (left) has single regulation but has two pressure settings, a fixed pressure for when empty and an adjustable setting dependant upon the weight of each load.

APPLICATIONS

- Die Change
- Pallet Transports
- Mold Transfers
- Roll Handlers
- Simple Turntables
- Coil Handler
- Simple Load Handling

OPTIONS

- Flat Top
- Conveyor Top Cradle Top
- Turn Table Top
- Control Handle
- Umbilical attached hand pendant
- Slide Mounted Air Bearings

STANDARD FEATURES - SLIDE MOUNTED AIR BEARING ELEMENTS (S1)

This option allows the Air Bearings to be inspected or cleaned without picking up the entire tool. They simply slide out from underneath like a drawer, even while the unit is loaded!

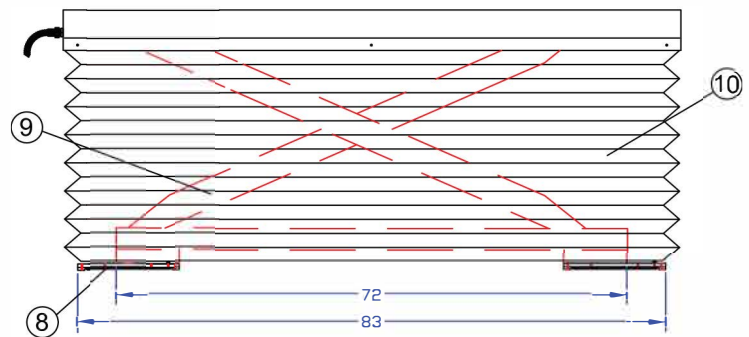
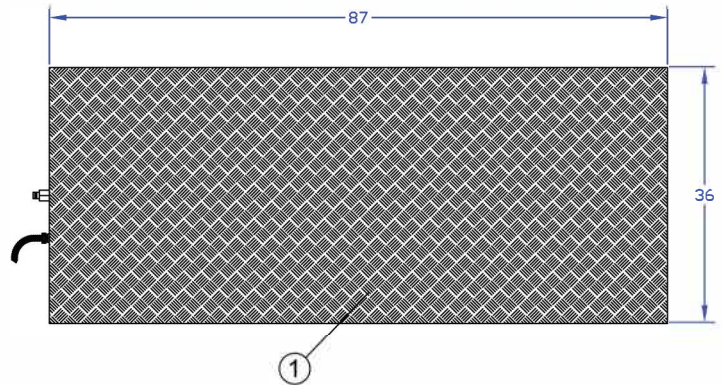
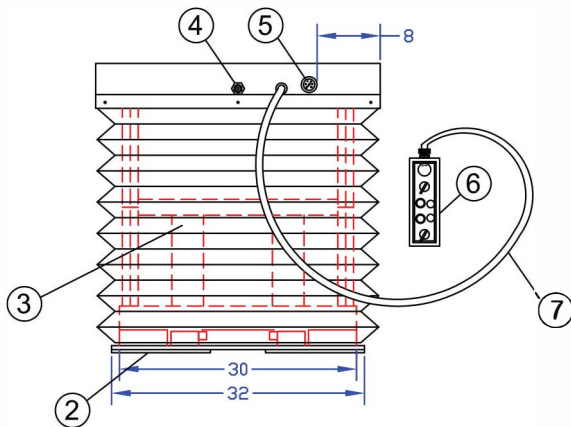
ITEM	QTY	DESCRIPTION
A	1	Supply Air Inlet, 1/2" NPT
B	1	Top Plate, 48" L x 24" W
C	2	Inner Scissor Arm
D	2	Outer Scissor Arm
E	16	Locking Screws for Air Bearings
F	4	Cam Followers
G	4	Manifold
A1	1	Air Motor
C1	1	Cylinder, Hydraulic
H1	1	Relief Valve Air/Hydraulic
K1-4	4	Air Bearing Element
L1	1	Muffler
M1	1	Pressure Gauge

ITEM	QTY	DESCRIPTION
M2	1	Pressure Gauge
P1	1	Pump, Hydraulic
R1	1	Precision Pressure Regulator
R2	1	Precision Pressure Regulator
R3	1	Pilot Op. Pressure Regulator, 1/2"
S1	4	Slide Mount set
T1	1	Reservoir
V1	1	Pushbutton Valve, Momentary
V2	1	Pushbutton Valve, Momentary
V3	1	Selector Valve, 3-position
V4	1	Valve, 3/2
V5	1	Valve, 3/2
V6	1	Or Valve

ENGINEERED SOLUTION

JMP Solutions utilizes their own Air Film Technology with standard lift table designs, to create custom transporters to fit the customer's applications.

Loads weighing over 8,000 lbs. are recommended to use JMP pneumatic Drive Units. The Drive Units consist of an air motor that drives the Air Film Transporter using variable speed by means of a friction wheel. The simple Control systems regulate the air pressure and flow to the Air Cushions and Drive Units (if equipped). Manual, remote-controlled, or automatic systems are available.



ITEM	QTY	DESCRIPTION
1	1	Checkerplate Top Platform
2	8	Slide Mount Rail/ Landing Pad
3	lot	Lift Mechanics (cylinders, etc.)
4	1	Air Supply Connect. 3/4" Quick Disconnect
5	1	Supply Pressure Gage, Panel Mount
6	1	Hand-held Remote Control Box
7	1	6-foot Umbilical Control Cord
8	4	Air-bearing Element. Model ME12S-1.2
9	4	Scissor Arms
10	1	Vinyl Accordion Curtain (87x36 O.D.)

SPECIFICATIONS

- Max Loading Capacity: 6,000 lbs.
- Lowered Height: 12"
- Full Stroke (Platform Travel): 28 inches
- Power Pack: On-board 4hp air motor drives (2) hydraulic cylinders
- Air Requirements: 3/4" 10 Air Supply Hose, 80psi, 80cfm

CONTROLS

- (1) UP pushbutton, (1) DOWN pushbutton, (1) E-STOP locking button
- (1) Air-bearings ON/OFF rotary selector switch
- (1) LOAD/NO-LOAD rotary selector switch,
- (2) Air-bearing PRESSURE ADJUST rotary knobs

CONTROLS

- Air-bearings = less than 85db on smooth sealed floor at optimum pressure
- Air motor = 85 db